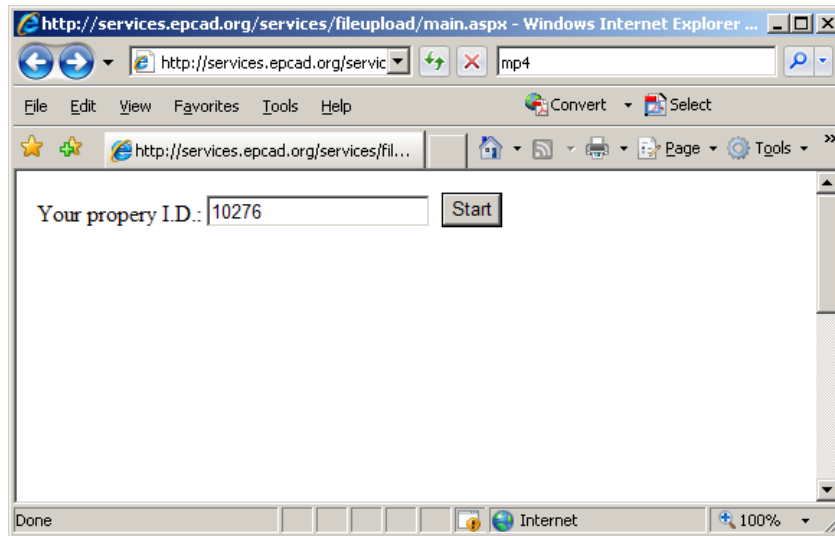
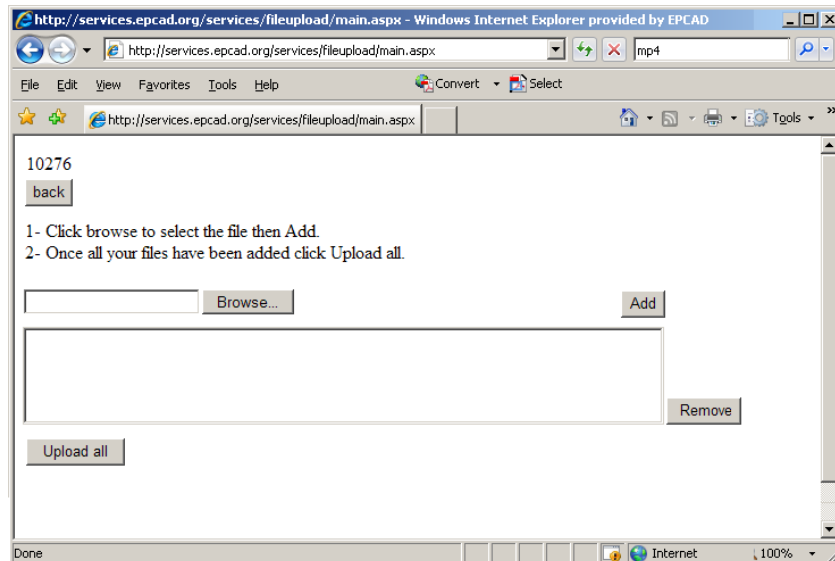


1. Please provide the property id for which you would like to submit supporting evidence for the appeal process. Your property id is located on the appraisal notice you received from El Paso Central Appraisal District. Click start to initialize submittal process.



2. Click browse to indicate what file to upload. You can upload as many files as needed.



3. Once you finish selecting all your files please click the "Upload all" Button.
4. You should receive a message that says, "All your files were uploaded".